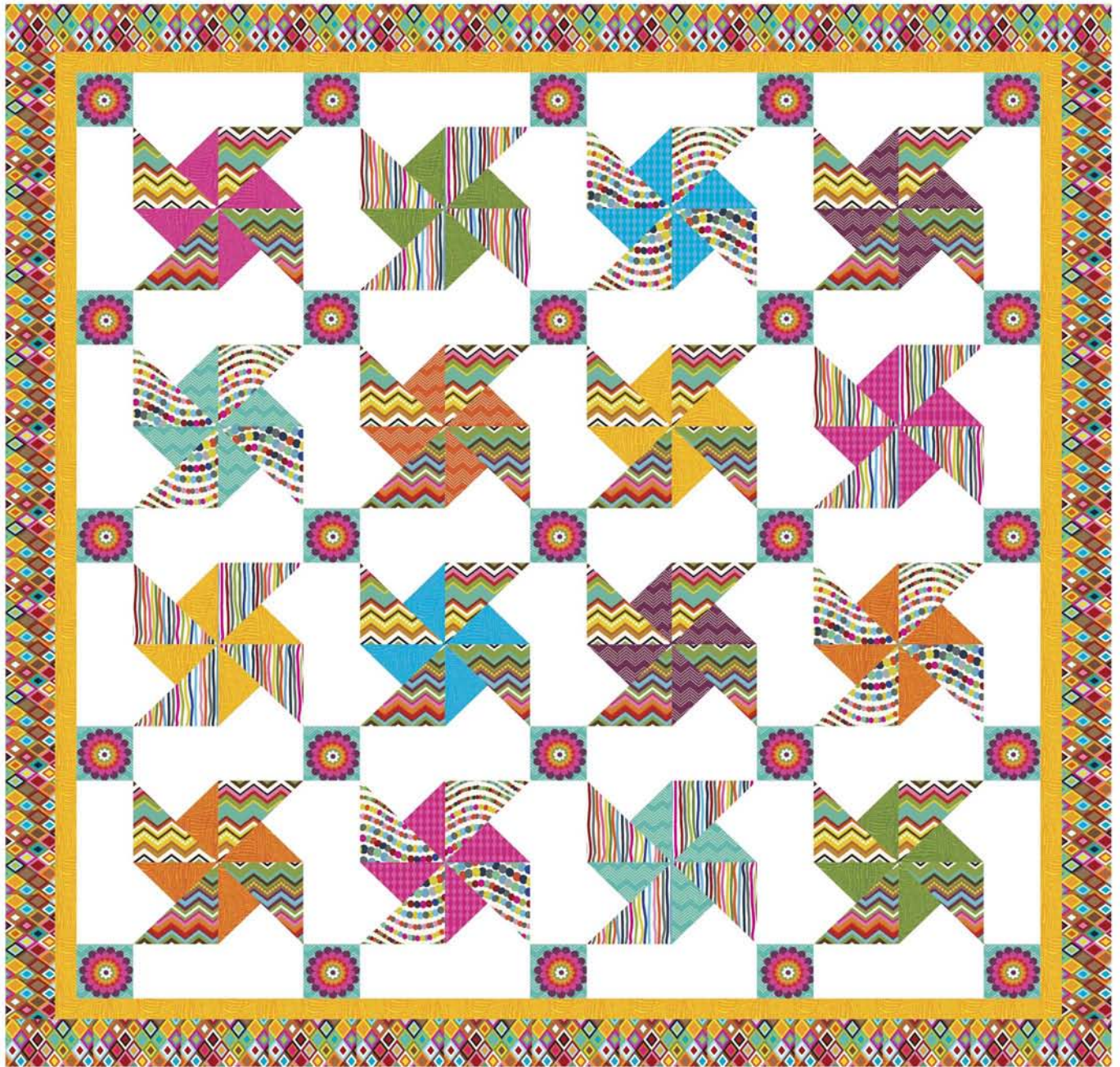


“Spin Out”

Designed by Bethany Fuller of Grace's Dowry Quilts
Featuring the African Surf and Mosaica by French Bull
Finished Size: 78 x 78”



Check www.windhamfabrics.com Free Project section to see if there are any pattern updates before you start your quilt

WINDHAM FABRICS

812 Jersey Ave ~ Jersey City, NJ 07310 ~ 201.659.0444 ~ FAX: 201.659.9719
www.windhamfabrics.com email: retail@windhamfabrics.com

"Spin Out"

Page 2



39561-2



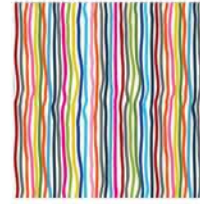
39559-X



39560-X



39566-X



39567-X



39568-7



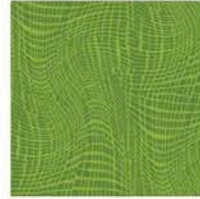
39568-3



39568-4



39568-5



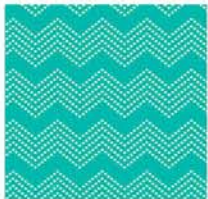
39568-6



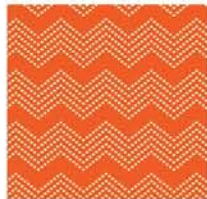
39563-4



39563-5



39562-2



39562-3



39562-1

Fabric Requirements:

2 2/3 yds white solid

1 yd flower print (39561-2) for cornerstones or enough to fussy cut 25 - 4 1/2" squares

7/8 yd 39559-X for Blocks

1 yd 39560-X for Outer Border

1/2 yd 39566-X for Blocks

1/2 yd 39567-X for Blocks

3/4 yd 39568-7 for Blocks and Inner Border

Fat Eighth each of 39562-2 & 3, 39563-4&5, 39568-3,4,5 & 6

7/8 yd 39562-1 for Blocks and Binding

Backing 4 3/4 yds

“Spin Out”

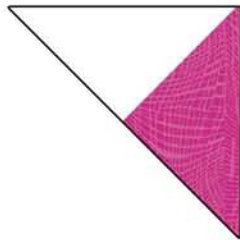
Page 3

Cutting Instructions:

- From the white solid, cut: (4) – 7 ¼" strips; sub-cut into (16) – 7 ¼" squares; then cut in half diagonally twice
cut, (5) – 12 ½" strips; sub-cut into 40 – 4 ½" x 12 ½" strips for sashing
- From 39559-X cut: (4) – 6 7/8" strips; sub-cut into (16) – 6 7/8" squares; cut in half diagonally once
- From 39566-X cut: (2) – 6 7/8" strips; sub-cut into (8) – 6 7/8" squares; cut in half diagonally once
- From 39567-X cut: (2) – 6 7/8" strips; sub-cut into (8) – 6 7/8" squares; cut in half diagonally once
- From 39562-1,2&3, 39563-4&5, and 39568-3,4,5,6&7, cut a TOTAL of (16) – 7 ¼" squares.
Cut each of these squares in half diagonally twice
- From 39561-2, fussy cut (25) – 4 ½" squares for cornerstones
- From 39568-7 cut: (8) – 2" strips for Inner Border
- From 39560-X cut: (8) – 4" strips for Outer Border
- From 39562-1 cut: (8) – 2 ½" strips for Binding

Piecing Instructions

Sew each colored quarter-square triangle to a white quarter-square triangle.
Press to the dark.



Sew each quarter-square triangle unit to a half-square triangle. Press toward the large triangle.



“Spin Out”

Page 4

Sew 4 units together, pressing seams open.



Arrange blocks according to the picture on cover. Assemble quilt with sashing strips and cornerstones.

Press seams toward the sashing strips.

Measure quilt center through the middle. Piece Inner Border strips together and cut 2 strips to this length. Pin well and sew to quilt sides. Measure across quilt center including these two borders. Cut 2 strips to this length, pin well and sew to quilt top and bottom.

Repeat this process for the Outer Border.

Quilt and bind. Enjoy!

If you plan to kit this project, please cut and sew your sample before cutting all kits, to ensure accuracy of project. As much as possible, we provide accurate projects, but due to fabric availability, not all projects are tested before publication. Thank you!

Always look on our website before starting your project to see if there are any updates or corrections

Be sure to visit www.windhamfabrics.com to see the complete collection and to download other Free Projects